

# AI-POWERED DATA OPERATIONS FOR THE MAPR DATA PLATFORM

Unravel for MapR

## Unravel and MapR Operationalize High Performance Data Applications

### **Fastest Time to Maximum Performance for Spark, ML and AI**

- Instantly understand and demonstrate how and why Spark applications underperform or fail
- Guarantee service levels and better accounting through detailed reporting and alerting
- Develop a data-driven, enterprise grade support capability for your modern data apps

### **Accelerate Data Operations for the MapR Data Platform**

- Reduce MTTR and ensure optimal cluster/cloud resource usage for the lowest TCO
- Eliminate finger-pointing between development and ops teams with verifiable, data-driven reporting for apps and clusters
- Real-time intelligence and autonomous tuning your ML, AI, IoT, BI, vDW, and ETL pipelines

### **Drastically Reduce Troubleshooting and Tuning Time for Spark**

- Unified monitoring and management platform for all Spark ecosystem components, apps and infrastructure
- Confidently run mission critical Spark applications in production
- Reduce Spark per-app costs through reduced resource consumption in terms of CPU/vcores, memory, disk, etc.

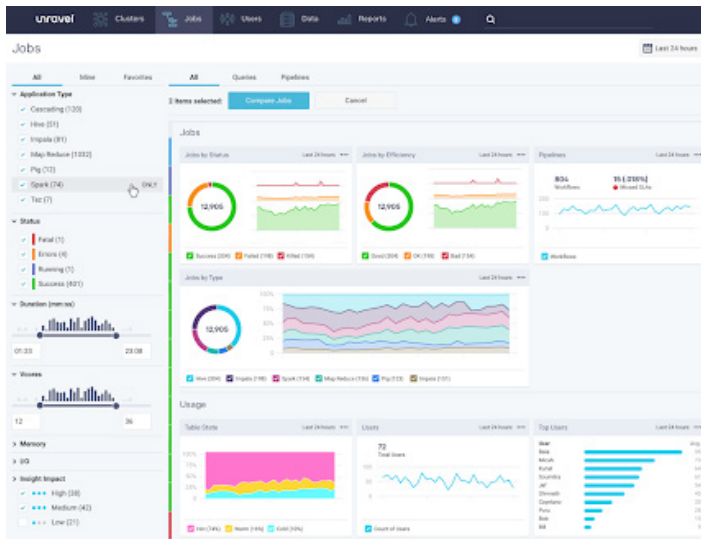
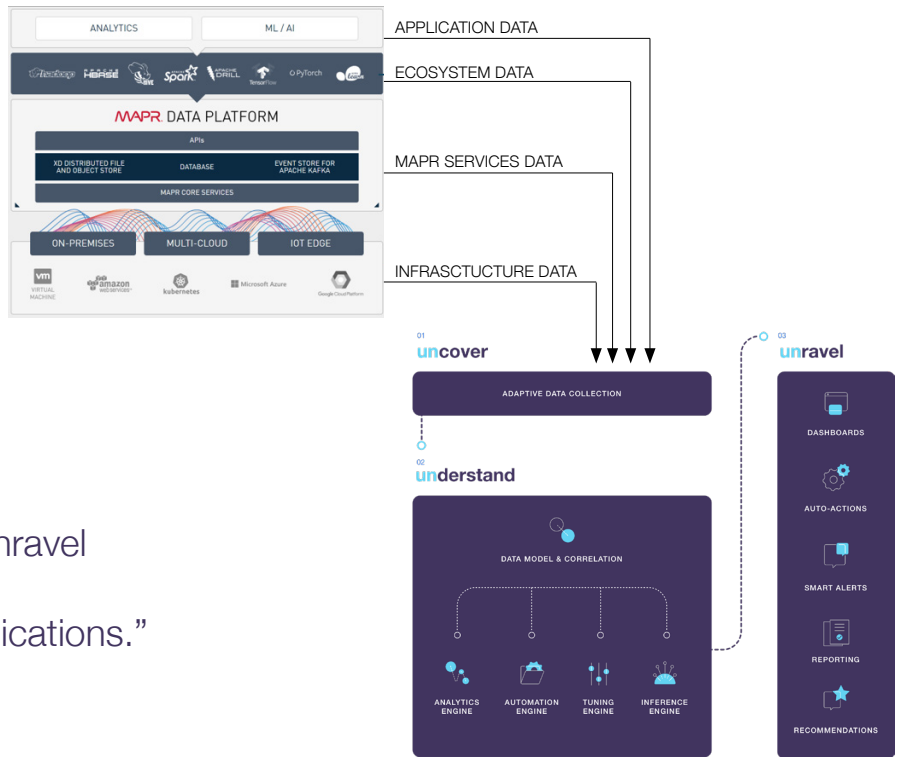
## Why Unravel for MapR?

Unravel was created to address the growing need to autonomously troubleshoot and tune modern big data applications using AI and machine learning. The combination of the MapR Data Platform and Unravel provides the highest performance, and predictable operations to meet the toughest enterprise SLAs.

Unravel is full-stack and cross-platform and is the one software solution you need to optimize data applications running on the MapR Data Platform.

“The combination of MapR and Unravel represents the state of the art for operationalizing modern data applications.”

– VP of Data Platforms, A Fortune 100 Financial Services Company



## Unified View of the MapR Platform and Running Applications

Unravel provides a real-time view of the entire MapR technology stack and the applications running there. Unravel can quickly report on performance and stability issues with Spark, MapReduce, Hive, etc. applications running on the MapR platform, and can then provide both contextualized recommendations or autonomous actions to fix problems as they arise.

## About Unravel

Unravel radically simplifies the way businesses understand and optimize the performance of their modern data applications – and the complex pipelines that power those applications. Providing a unified view across the entire stack, Unravel’s [AI-powered] data operations platform leverages AI, machine learning, and advanced analytics to offer actionable recommendations and automation for tuning, troubleshooting, and improving performance – both today and tomorrow.

By operationalizing how you do data, Unravel’s solutions support modern big data leaders including Kaiser Permanente, TIAA, Adobe, Deutsche Bank, wayfair and Neustar. The company is headquartered in Palo Alto, CA, and is backed by Menlo Ventures, GGV Capital, M12, Data Elite Ventures, and Jyoti Bansal. To learn more, visit unraveldata.com.